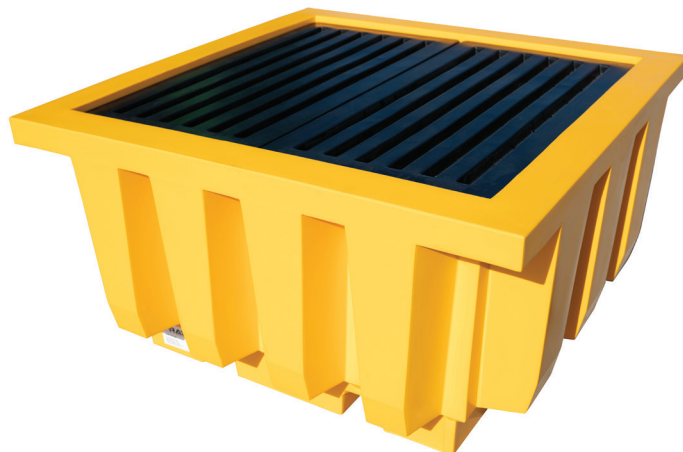


SINGLE IBC SPILL CONTAINMENT

SPILL CONTAINMENT BUND PROVIDES A SAFE, CONVENIENT AND EFFECTIVE FACILITY TO STORE A SINGLE IBC CONTAINER.

FEATURES AND BENEFITS:

- Proudly Australian Made
- Excellent chemical resistance and will not rust or corrode
- Allows safe and convenient IBC tank handling and dispensing.
- Large capacity spill containment bund.
- 1210 x 1210mm steel reinforced deck, allows safe and convenient placement of IBC tanks.
- Accessible from either side.
- Can be lifted by forklift.
- 2" drain bung



SPECIFICATIONS

Material:	UV stable Low Density Polyethylene
Weight:	75 kg
Sump Capacity:	1185 litres
Distribution Load:	Supports uniformly distributed loads of up to 1600kg.
Forklift Access:	2 Way
Dimensions:	Height 800mm Width 1470mm Depth 1470mm
Storage:	1 x 1000L IBC unit

INSTRUCTIONS

1. Ensure stored liquids are chemically compatible with polyethylene plastic.
2. Ensure any liquids in sump are removed promptly.
3. Ensure payload does not exceed maximum UDL.
4. Ensure largest container volume does not exceed sump capacity.